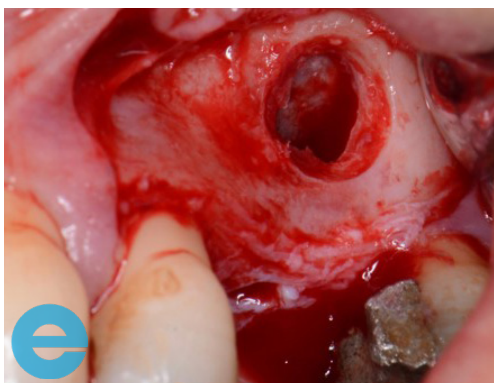
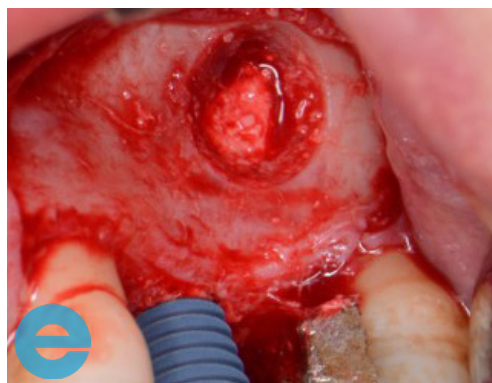


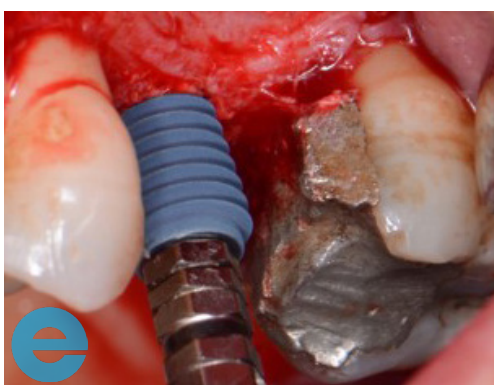
SINUS AUGMENTATION - LATERAL WINDOW



1. Lateral window.



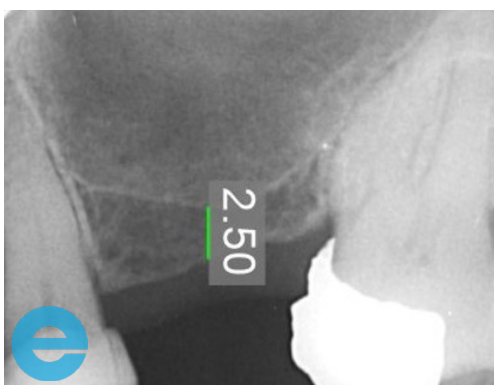
2. Osteotomy prepared and EthOss placed in sinus. As implant is placed material is forced out the lateral window.



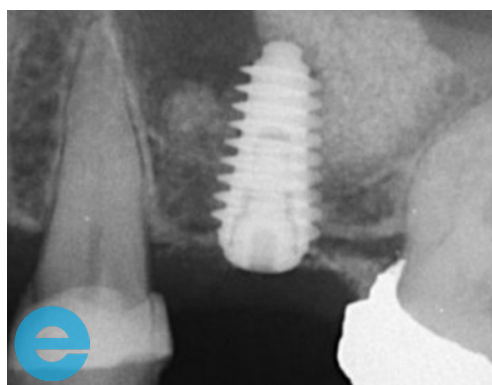
3. Implant placed.



4. Additional grafting with drier mix of EthOss to seal the lateral window.

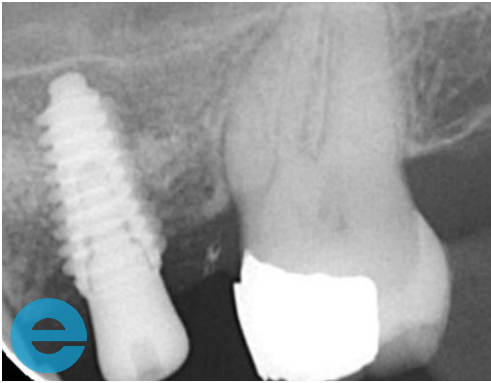


5. Initial situation - 2.5mm residual bone.

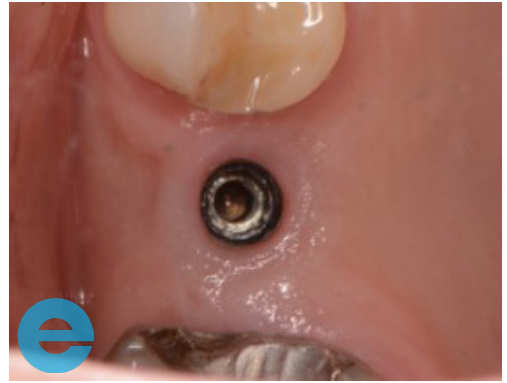


6. Implant placed following graft through lateral window.

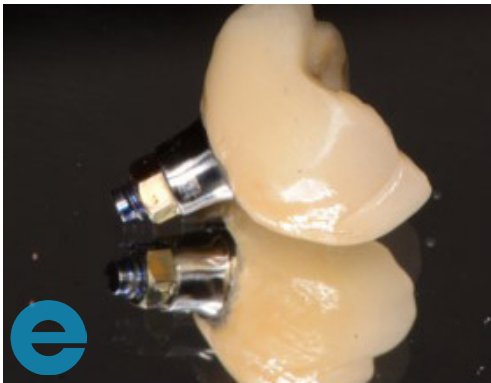
SINUS AUGMENTATION - LATERAL WINDOW



7. 10 weeks post-op - ready to load.



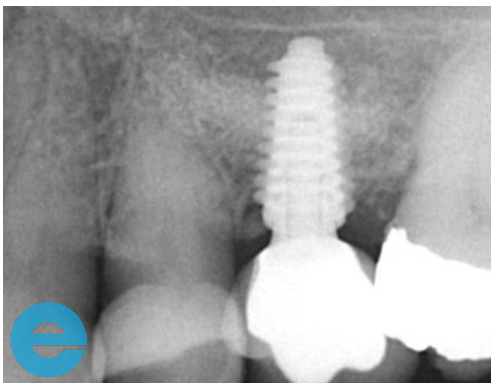
8. 10 weeks post-op - ready to load.



9. Screw retained crown.



10. Loaded.



11. Loaded 2 months.



GROW STRONGER

USEFUL RESOURCES

RECOMMENDED CLINICAL PROTOCOL

Clinical study showcasing recommended clinical protocol for EthOss

Download

SURGICAL GUIDELINES

The official recommended guide on how to use EthOss

Download

HOW TO MIX ETHOSS

Explainer video

Watch